

GEMÜ 202

Electrically operated solenoid valve



Features

- Good cleanability
- The solenoid can be replaced without removing the valve body from the piping
- Hermetic separation between medium and actuator

Description

The GEMÜ 202 directly controlled 2/2-way solenoid valve has a completely plastic encapsulated coil. The armature is sealed by a bellows made of PTFE backed by an additional safety diaphragm. The valve body is available in various materials and with a straight through or angle valve body design.

Technical specifications

- Nominal sizes*: DN 10 to 15
- Operating pressure*: 0 to 2 bar
- Media temperature: -20 to 100 °C
- Supply voltages: 12 V DC | 120 V, 50/60 Hz | 230 V AC, 50/60 Hz | 24 V AC, 50/60 Hz | 24 V DC
- Valve body materials: PVC-U | PVDF

* depending on version and/or operating parameters



Product line



GEMÜ 52



GEMÜ 102



GEMÜ 202



GEMÜ 205

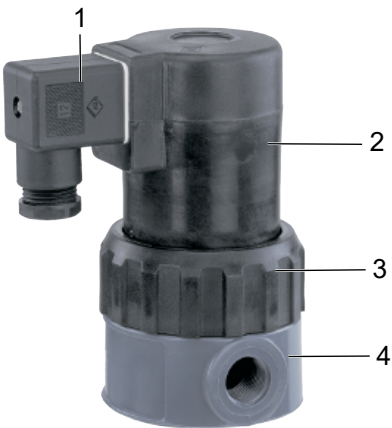


GEMÜ 225

Nominal sizes	DN 2 to 6	DN 6 to 10	DN 10 to 15	DN 10 to 50	DN 15 to 50
Voltage					
12 V DC	●	●	●	-	-
120 V, 50/60 Hz	●	●	●	●	●
230 V AC, 50/60 Hz	●	●	●	●	●
24 V AC, 50/60 Hz	●	●	●	●	●
24 V DC	●	●	●	●	●
Media temperature	-20 to 100 °C	-20 to 100 °C	-20 to 100 °C	-20 to 60 °C	-20 to 60 °C
Operating pressure	0 to 6 bar	0 to 4 bar	0 to 2 bar	0 to 6 bar	0 to 6 bar
Connection types					
Solvent cement socket	●	●	●	●	-
Solvent cement spigot	-	-	-	●	●
Spigot	-	-	-	●	●
Threaded socket	●	●	●	●	-
Union end	-	-	-	●	●

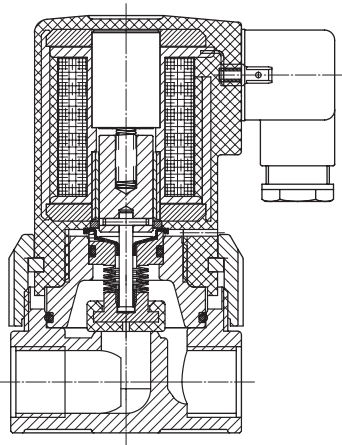
* depending on version and/or operating parameters

Product description



Item	Name	Materials
1	Plug	PA
2	Coil housing	PP
3	Union of valve housing	PVC-U, grey or PVDF
4	Valve body	PVC-U, grey or PVDF
	Seal materials	FPM, PTFE or EPDM

Sectional view



GEMÜ CONEXO

The interaction of valve components that are equipped with RFID chips and an associated IT infrastructure actively increase process reliability.



Thanks to serialization, every valve and every relevant valve component such as the body, actuator or diaphragm, and even automation components, can be clearly traced and read using the CONEXO pen RFID reader. The CONEXO app, which can be installed on mobile devices, not only facilitates and improves the "installation qualification" process, but also makes the maintenance process much more transparent and easier to document. The app actively guides the maintenance technician through the maintenance schedule and directly provides him with all the information assigned to the valve, such as test reports, testing documentation and maintenance histories. The CONEXO portal acts as a central element, helping to collect, manage and process all data.

For further information on GEMÜ CONEXO please visit:

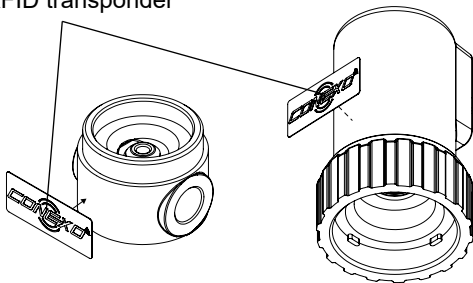
www.gemu-group.com/conexo

Ordering

GEMÜ Conexo must be ordered separately with the ordering option "CONEXO" (see order data).

Installing the RFID transponder

RFID transponder



Availability

Voltage/Frequency

	Standard	UL approval
24 V 50/60 Hz	X	X
120 V 50/60 Hz	X	-
230 V 50/60 Hz	X	-
12 V DC	X	X
24 V DC	X	X

Valve body material

	PVC-U	PVDF
Threaded socket	X	X
Solvent cement socket	X	-

Order data

The order data provide an overview of standard configurations.

Please check the availability before ordering. Other configurations available on request.

Order codes

1 Type	Code
Solenoid valve, directly controlled	202
2 DN	Code
DN 10	10
DN 15	15
3 Body configuration	Code
2/2-way body	D
Angle valve body	E
4 Connection type	Code
Threaded socket DIN ISO 228	1
Solvent cement socket DIN	2
5 Valve body material	Code
PVC-U, grey	1
PVDF	20
6 Seal material	Code
FPM	4
PTFE	5

6 Seal material	Code
EPDM	14
7 Control function	Code
Normally closed (NC)	1
8 Voltage	Code
12 V	12
24 V	24
120 V	120
230 V	230
9 Frequency	Code
DC	DC
50 - 60 Hz	50/60
10 Special specification	Code
UL approval	U
Without	
11 CONEXO	Code
Integrated RFID chip for electronic identification and traceability	C

Order example

Order option	Code	Description
1 Type	202	Solenoid valve, directly controlled
2 DN	10	DN 10
3 Body configuration	D	2/2-way body
4 Connection type	1	Threaded socket DIN ISO 228
5 Valve body material	1	PVC-U, grey
6 Seal material	4	FPM
7 Control function	1	Normally closed (NC)
8 Voltage	230	230 V
9 Frequency	50/60	50 - 60 Hz
10 Special specification		Without
11 CONEXO	C	Integrated RFID chip for electronic identification and traceability

Technical data

Medium

Working medium: Corrosive, inert, gaseous and liquid media which have no negative impact on the physical and chemical properties of the body and seal material.

Temperature

Media temperature: PVC-U, grey (code 1): 10 to 60 °C
PVDF (code 20): -20 to 100 °C

Ambient temperature: 10 to 40 °C

Storage temperature: 0 to 40 °C

Product compliance

Approvals: UL approval, UR (recognized) Y10Z2
Only for 24 V 50/60 Hz, 230 V 50/60 Hz, 12 V DC and 24 V DC

Pressure Equipment Directive: 2014/68/EU

Low Voltage Directive: 2014/35/EU

EMC Directive: 2014/30/EU
Technical standards used:
EN 55011:1991 (150 kHz to 30 MHz)
EN 55014:1993 (148.5 kHz to 30 MHz)

Mechanical data

Protection class: IP 65

Weight: 0.21 kg

Cable gland: PG 11

Pressure

Operating pressure: DN 10: 0 to 2.0 bar
DN 15: 0 to 1.0 bar

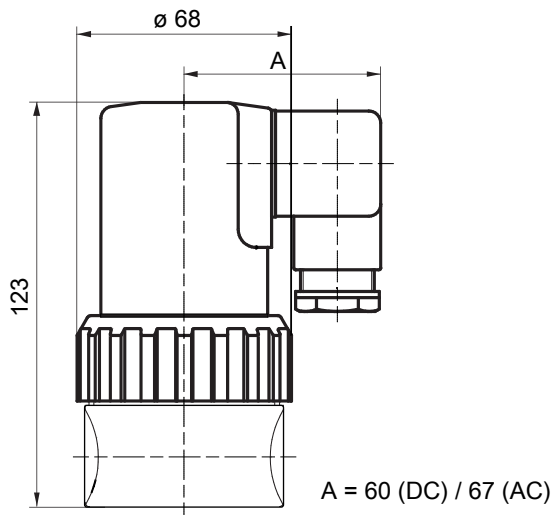
Kv values: DN 10: 1.70 m³/h
DN 15: 2.30 m³/h

Electrical data

Power consumption:	Pull in / Hold in AC and DC voltage: 14.0 W / 15.25 W (with UL approval)
Permissible voltage tolerance:	±10 % to VDE 0580
Duty cycle:	Continuous duty
Wiring note:	Special wiring on request. When using electronic switches and additional wiring, carefully design out any potential residual currents upon installation.
Installation note:	Please note: A plug with an integrated bridge rectifier must be used for the AC design (provided in the scope of delivery).

Dimensions

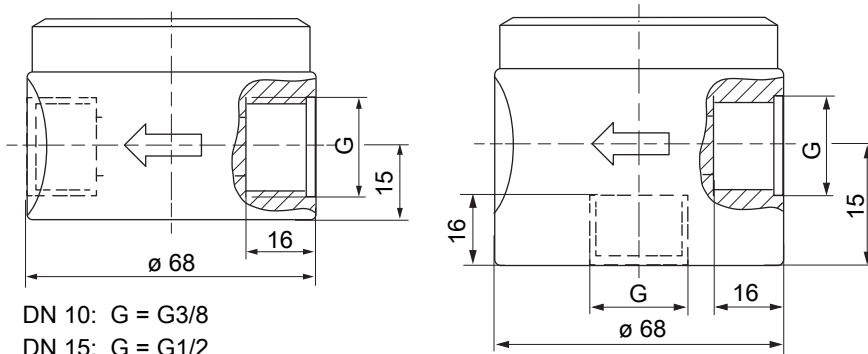
Actuator dimensions



Dimensions in mm

Body dimensions

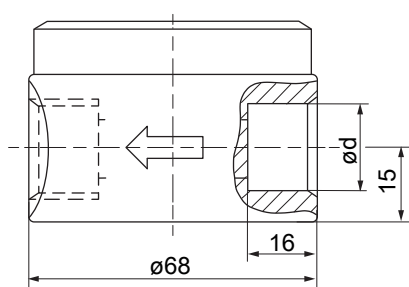
Threaded socket (code 1)



DN 10: G = G3/8
DN 15: G = G1/2

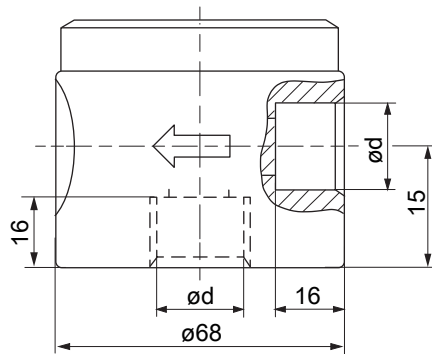
Dimensions in mm

Solvent cement socket (code 2)

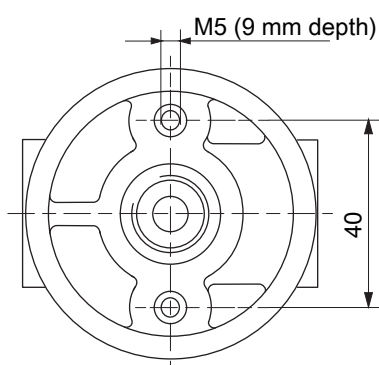


DN 10: $\varnothing d = 16$
DN 15: $\varnothing d = 20$

Dimensions in mm



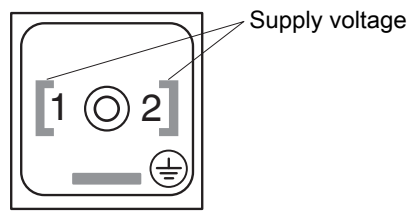
Mounting dimensions



Dimensions in mm

Electrical connection

Connection diagram for plug



Accessories



GEMÜ 1220

Plug

GEMÜ 1220 is a plug complying with DIN EN 175301-803 design A with a light and with or without interference suppressor. Various versions available. The DC voltage version with a bridge rectifier has a plug with reverse battery protection.

Ordering information

For ordering information see datasheet GEMÜ 1220



GEMÜ 1221

Plug

GEMÜ 1221 is a plug complying with DIN EN 175301-803 design A without light and with or without interference suppressor. Various versions available. The DC voltage version with a bridge rectifier has a plug with reverse battery protection.

Ordering information

Type	Voltage/Frequency	Item number
1220	24 V DC	88397314
	230 V AC	88004447



GEMÜ Gebr. Müller Apparatebau GmbH & Co. KG
Fritz-Müller-Straße 6-8, 74653 Ingelfingen-Criesbach,
Germany
Tel. +49 (0)7940 123-0 · info@gemue.de
www.gemu-group.com