

## Angle Seat Globe Valve, Metal

### Construction

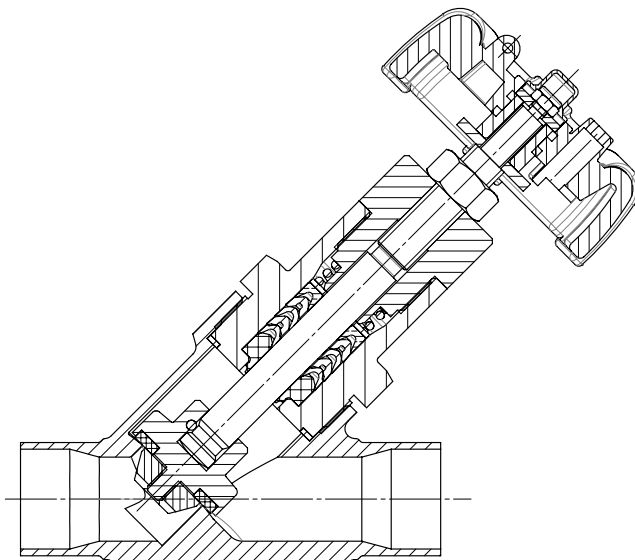
The GEMÜ 507 manually operated 2/2-way angle seat globe valve has an ergonomically designed plastic handwheel. The valve spindle is sealed by a self-adjusting gland packing providing low maintenance and reliable valve spindle sealing even after a long service life. The wiper ring fitted in front of the gland packing protects it against contamination and damage. A handwheel extension (not for bonnet size 0) is available as an option enabling full operator isolation.

### Features

- Various valve body connections: threaded sockets, threaded spigots, butt weld spigots
- Standard floating plug on spindle ensures excellent seat sealing
- Good flow capability due to angle seat design
- Optionally suitable for contact with food according to Regulation (EC) No. 1935/2004 (K-No. 2013)
- Standard gland packing suitable for vacuum up to 20 mbar (abs.)
- Handwheel locknut as standard
- Optionally available as control valve with regulating cone



Sectional drawing



## Technical data

### Working medium

Corrosive, inert, gaseous and liquid media which have no negative impact on the physical and chemical properties of the body and seal material.

Max. perm. pressure of working medium see table

Media temperature -10 °C to 180 °C

Max. permissible viscosity 600 mm<sup>2</sup>/s (cSt)

Other versions for lower/higher temperatures and viscosities on request.

### Ambient conditions

Max. ambient temperature 60 °C

### Maximum permissible seat leakage rate / Open-Closed-Valve

| Seat seal | Standard       | Test procedure | Leakage rate | Test medium |
|-----------|----------------|----------------|--------------|-------------|
| PTFE      | DIN EN 12266-1 | P12            | A            | air         |

### Maximum permissible seat leakage class / Control valve

| Seat seal | Standard       | Test procedure | Leakage rate | Test medium |
|-----------|----------------|----------------|--------------|-------------|
| PTFE      | DIN EN 60534-4 | 1              | VI           | air         |
| Metal     | DIN EN 60534-4 | 1              | IV           | air         |

### Bonnet weight [kg]

| Bonnet size | DN 6 | DN 8 | DN 10 | DN 15 | DN 20 | DN 25 | DN 32 | DN 40 | DN 50 | DN 65 | DN 80 |
|-------------|------|------|-------|-------|-------|-------|-------|-------|-------|-------|-------|
| 0           | 0.3  | 0.3  | 0.3   | 0.3   | -     | -     | -     | -     | -     | -     | -     |
| 1 / 1E      | -    | 1.0  | 1.0   | 1.0   | 1.2   | 1.4   | 2.4   | 2.6   | 3.8   | -     | -     |
| 2 / 2E      | -    | -    | -     | -     | -     | -     | -     | -     | -     | 6.8   | 8.4   |

## Technical data

### Max. operating pressure [bar]

| Bonnet size | DN 6 | DN 8 | DN 10 | DN 15 | DN 20 | DN 25 | DN 32 | DN 40 | DN 50 | DN 65 | DN 80 |
|-------------|------|------|-------|-------|-------|-------|-------|-------|-------|-------|-------|
| 0           | 25   | 25   | 25    | 25    | -     | -     | -     | -     | -     | -     | -     |
| 1 / 1E      | -    | 25   | 25    | 25    | 25    | 25    | 25    | 25    | 25    | -     | -     |
| 2 / 2E      | -    | -    | -     | -     | -     | -     | -     | -     | -     | 16    | 16    |

All pressures are gauge pressures.

### Pressure / temperature correlation for angle seat globe valve bodies

| Connection code               | Material code | Max. allowable operating pressures in bar at temperature °C* |      |        |      |      |      |
|-------------------------------|---------------|--|------|--------|------|------|------|
|                               |               | RT   | 100  | 150    | 200  | 250  | 300  |
| 1, 9, 17, 37, 60, 63, 3C, 3D  | 37            | 25.0   | 23.8 | 21.4   | 18.9 | 17.5 | 16.1 |
| 0, 16, 17, 18, 37, 59, 60, 65 | 34            | 25.0   | 24.5 | 22.4   | 20.3 | 18.2 | 16.1 |
| 13 (DN 15 - DN 50)            | 34            | 25.0   | 23.6 | 21.5   | 19.8 | 18.6 | 17.2 |
| 80, 88 (DN 15 - DN 40)        | 34            | 25.0   | 21.2 | 19.3** | -    | -    | -    |
| 80, 88 (DN 50 - DN 80)        | 34            | 16.0   | 16.0 | 16.0** | -    | -    | -    |
| 82 (DN 15 - DN 32)            | 34            | 25.0   | 21.2 | 19.3** | -    | -    | -    |
| 82 (DN 40 - DN 65)            | 34            | 16.0   | 16.0 | 16.0** | -    | -    | -    |
| 86 (DN 15 - DN 40)            | 34            | 25.0   | 21.2 | 19.3** | -    | -    | -    |
| 86 (DN 50 - DN 65)            | 34            | 16.0   | 16.0 | 16.0** | -    | -    | -    |
| 10 (DN 15 - DN 50)            | 37            | 25.0   | 25.0 | 22.7   | 21.0 | 19.8 | 18.5 |
| 47 (DN 15 - DN 50)            | 34            | 15.9   | 13.3 | 12.0   | 11.1 | 10.2 | 9.7  |
| 0, 16, 17, 18, 59, 60         | 40            | 25.0   | 20.6 | 18.7   | 17.1 | 15.8 | 14.8 |
| 17, 59, 60                    | C2            | 25.0   | 21.2 | 19.3   | 17.9 | 16.8 | 15.9 |

\* The valves can be used down to -10°C  
All pressures are gauge pressures.

\*\* max. temperature 140 °C

RT = Room Temperature

### Kv values [m<sup>3</sup>/h]

|                                  | DN 6 | DN 8 | DN 10 | DN 15 | DN 20 | DN 25 | DN 32 | DN 40 | DN 50 | DN 65 | DN 80 |
|----------------------------------|------|------|-------|-------|-------|-------|-------|-------|-------|-------|-------|
| Butt weld spigots,<br>DIN 11850  | 1.6  | 1.8  | 2.4   | 2.4   | -     | -     | -     | -     | -     | -     | -     |
| Butt weld spigots,<br>DIN 11866  | -    | 2.2  | 4.5   | 5.5   | 11.7  | 20.5  | 33.0  | 51.0  | 61.0  | 110.0 | 117.0 |
| Threaded sockets,<br>DIN ISO 228 | -    | -    | 4.5   | 5.4   | 10.0  | 15.2  | 23.0  | 41.0  | 68.0  | 95.0  | 130.0 |

Kv values determined in accordance with DIN EN 60534. The Kv value specifications refer to the largest actuator for the respective nominal size. The Kv values for other product configurations (e.g. other connection types or body materials) may differ.

## Technical data

### Correlation\* Kv value, operating pressure, regulating cone number

| Nominal size<br>DN | Kv value<br>[m <sup>3</sup> /h] | Operating<br>pressure [bar] | Actuator<br>size | Regulating cone no. |                  |
|--------------------|---------------------------------|-----------------------------|------------------|---------------------|------------------|
|                    |                                 |                             |                  | linear              | equal-percentage |
| 15                 | 5                               | 25                          | 1                | RS235               | RS245            |
| 20                 | 10                              | 25                          | 1                | RS236               | RS246            |
| 25                 | 15                              | 25                          | 1                | RS237               | RS247            |
| 32                 | 24                              | 25                          | 1                | RS238               | RS248            |
| 40                 | 38                              | 25                          | 1                | RS239               | RS249            |
| 50                 | 60                              | 25                          | 1                | RS240               | RS250            |

\* not for connection code 37, 59, 80, 88

### Correlation\* Kv value, operating pressure, regulating cone number

| Nominal size<br>DN | Kv value<br>[m <sup>3</sup> /h] | Operating<br>pressure [bar] | Actuator<br>size | Regulating cone no. |                  |
|--------------------|---------------------------------|-----------------------------|------------------|---------------------|------------------|
|                    |                                 |                             |                  | linear              | equal-percentage |
| 15                 | 2.7                             | 25                          | 1                | RS251               | RS261            |
| 20                 | 6.3                             | 25                          | 1                | RS252               | RS262            |
| 25                 | 13.3                            | 25                          | 1                | RS253               | RS263            |
| 40                 | 35.6                            | 25                          | 1                | RS254               | RS264            |
| 50                 | 58.0                            | 25                          | 1                | RS255               | RS265            |

\* only for connection code 37, 59, 80, 88

Please always order standard regulating cone with special function "C" – rigid valve plug.

## Order data

| Body configuration  | Code | Valve body material   | Code  |
|---|------|---|-------|
| 2/2-way body  | D    | 1.4435 (ASTM A 351 CF3M $\cong$ 316L), Investment cast.   | 34    |
| Angle body<br>only in material code 37 (DN 15 - 50)   | E    | 1.4408, Investment casting  | 37    |
|   |      | 1.4435 (316 L), Forged body   | 40    |
|   |      | 1.4435, Investment casting  | C2*   |
|   |      | Material equivalency 316 L  |       |
|   |      | * A surface finish from the order code table "K number" must be specified for valve body material C2. |       |
| Connection  | Code | Seat seal   | Code  |
| <b>Butt weld spigots</b>  |      | PTFE  | 5     |
| Spigots DIN   | 0    | PTFE, glass fibre reinforced  | 5G    |
| Spigots EN 10357 series B   | 16   | PTFE, USP Class VI  | 5P    |
| Spigots EN 10357 series A<br>(formerly DIN 11850 series 2) / DIN 11866 series A   | 17   | PEEK (for bonnet 0)   | PK    |
| Spigots DIN 11850 series 3  | 18   |   |       |
| Spigots SMS 3008  | 37   |   |       |
| Spigots ASME BPE  | 59   |   |       |
| Spigots ISO 1127 / EN 10357 series C /<br>DIN 11866 series B  | 60   |   |       |
| Spigots ANSI/ASME B36.19M Schedule 10s  | 63   |   |       |
| Spigots ANSI/ASME B36.19M Schedule 40s  | 65   |   |       |
| <b>Threaded connections</b>   |      |   |       |
| Threaded sockets DIN ISO 228  | 1    |   |       |
| Threaded socket Rc ISO 7-1,<br>EN 10226-1, JIS B 0203, BS 21,<br>end-to-end dimension ETE DIN 3202-4 series M8                                      | 3C   |   |       |
| Threaded spigots DIN ISO 228  | 9    |   |       |
| Threaded sockets NPT<br>length DIN 3202-4 series M8   | 3D   |   |       |
| <b>Flanges</b>  |      |   |       |
| Flanges EN 1092 / PN25 / form B<br>length EN 558, series 1  | 10   |   |       |
| Flanges EN 1092 / PN25 /form B<br>length see body dimensions  | 13   |   |       |
| Flanges ANSI Class 125/150 RF<br>length see body dimensions   | 47   |   |       |
| <b>Clamp connections</b>  |      |   |       |
| Clamps ASME BPE for pipe ASME BPE,<br>length ASME BPE   | 80   |   |       |
| Clamps DIN 32676 series B for pipe EN ISO 1127,<br>length EN 558, series 1  | 82   |   |       |
| Clamps DIN 32676 series A for pipe DIN 11850,<br>length EN 558, series 1  | 86   |   |       |
| Clamps ASME BPE for pipe ASME BPE,<br>length EN 558, series 1   | 88   |   |       |
| Version   | Code | Control function  | Code  |
| Gland packing PTFE / PTFE<br>suitable for contact with food according to EU Regulation 1935/2004  | 2013 | Manually operated with handwheel lock nut   | 0     |
| Media temperature -10 to 210 °C (only with seat seal Code 5G and 10)  | 2023 |   |       |
| Surface finish for valve body material C2   |      |   |       |
| Ra $\leq$ 0.6 $\mu$ m (25 $\mu$ inch) for process contact surfaces, in accordance with ASME BPE SF2 + SF3,<br>mechanically polished internal        | 1903 |   |       |
| Ra $\leq$ 0.8 $\mu$ m (30 $\mu$ inch) for process contact surfaces, in accordance with DIN 11866 H3,<br>mechanically polished internal              | 1904 |   |       |
| Ra $\leq$ 0.4 $\mu$ m (15 $\mu$ inch) for process contactsurfaces, in accordance with DIN 11866 H4, ASME BPE SF1,<br>mechanically polished internal | 1909 |   |       |
| Ra $\leq$ 0.6 $\mu$ m for process contact surfaces, in accordance with ASME BPE SF6,<br>electropolished internal/external                           | 1953 |   |       |
| Ra $\leq$ 0.8 $\mu$ m for process contact surfaces, in accordance with DIN 11866 HE3,<br>electropolished internal/external                          | 1954 |   |       |
| Ra $\leq$ 0.4 $\mu$ m for process contact surfaces, in accordance with DIN 11866 HE4/ASME BPE SF5,<br>electropolished internal/external             | 1959 |   |       |
| Bonnet size   | Code | Regulating cone   | R-No. |
| Handwheel diameter 32 mm  | 0    | For the regulating cone no. (R-No.) - linear or equal-percentage<br>(mod.)- please refer to the table |       |
| Handwheel diameter 90 mm  | 1    |   |       |
| Handwheel diameter 90 mm<br>Handwheel extension   | 1E   |   |       |
| Handwheel diameter 140 mm   | 2    |   |       |
| Handwheel diameter 140 mm<br>Handwheel extension  | 2E   |   |       |

## Order data

| Special version  | Code |
|--|------|
| Rigid plug fixing *, special version for oxygen  | B    |
| Rigid plug fixing *  | C    |
| Special version for oxygen (max. temperature 60 °C, max. operating pressure 10 bar),<br>Flow direction: under the seat | S    |
| * Standard for bonnet size 0   |      |

| Order example              | 507 | 25 | D | 60 | 34 | 5 | 0 | 1 | RS237 | - | C |
|----------------------------|-----|----|---|----|----|---|---|---|-------|---|---|
| Type                       | 507 |    |   |    |    |   |   |   |       |   |   |
| Nominal size               |     | 25 |   |    |    |   |   |   |       |   |   |
| Body configuration (code)  |     |    | D |    |    |   |   |   |       |   |   |
| Connection (code)          |     |    |   | 60 |    |   |   |   |       |   |   |
| Valve body material (code) |     |    |   |    | 34 |   |   |   |       |   |   |
| Seat seal (code)           |     |    |   |    |    | 5 |   |   |       |   |   |
| Control function (code)    |     |    |   |    |    |   | 0 |   |       |   |   |
| Bonnet size (code)         |     |    |   |    |    |   |   | 1 |       |   |   |
| Regulating cone (R-No.)    |     |    |   |    |    |   |   |   | RS237 |   |   |
| Version (code)             |     |    |   |    |    |   |   |   |       | - |   |
| Special version (code)     |     |    |   |    |    |   |   |   |       |   | C |

### Version for food contact

For food contact, the product must be ordered with the following ordering options:

Version code 2013

Seat seal code 5, 5G

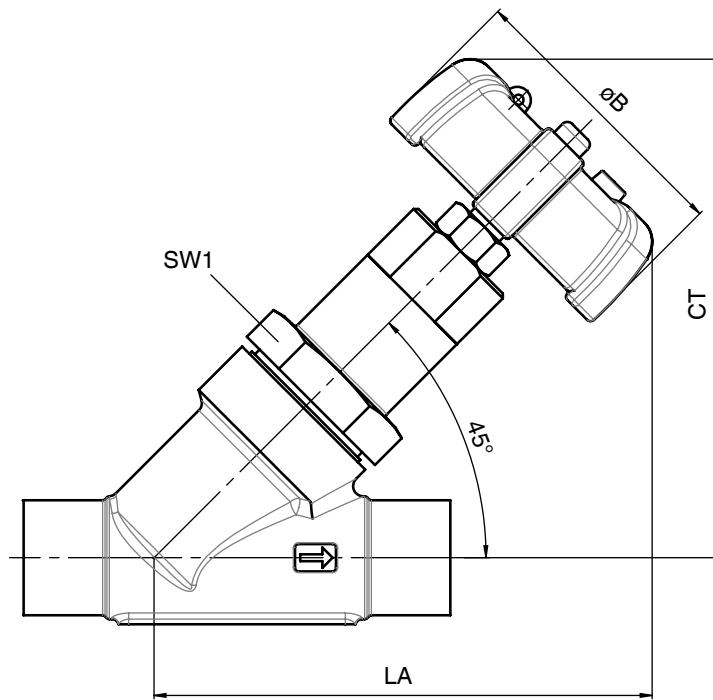
Valve body material code 34, 37, 40, C2

## Dimensions [mm]

### Installation dimensions - Valve with 2/2-way body

| Bonnet | DN | SW1 |             | øB  | CT/LA (max. height)     |                     |
|--------|----|-----|-------------|-----|-------------------------|---------------------|
|        |    |     |             |     | Control function code 0 | Bonnet code 1E, 2E* |
| 0      | 6  | 24  | hexagonal   | 32  | 89                      | -                   |
| 0      | 8  | 24  | hexagonal   | 32  | 89                      | -                   |
| 0      | 10 | 24  | hexagonal   | 32  | 89                      | -                   |
| 0      | 15 | 24  | hexagonal   | 32  | 89                      | -                   |
| 1      | 8  | 41  | hexagonal   | 90  | 149                     | 168                 |
| 1      | 10 | 41  | hexagonal   | 90  | 149                     | 168                 |
| 1      | 15 | 41  | hexagonal   | 90  | 152                     | 171                 |
| 1      | 20 | 46  | hexagonal   | 90  | 159                     | 179                 |
| 1      | 25 | 46  | hexagonal   | 90  | 167                     | 186                 |
| 1      | 32 | 41  | double flat | 90  | 176                     | 196                 |
| 1      | 40 | 41  | double flat | 90  | 185                     | 205                 |
| 1      | 50 | 41  | double flat | 90  | 196                     | 216                 |
| 2      | 65 | 60  | double flat | 140 | 259                     | 277                 |
| 2      | 80 | 60  | double flat | 140 | 276                     | 294                 |

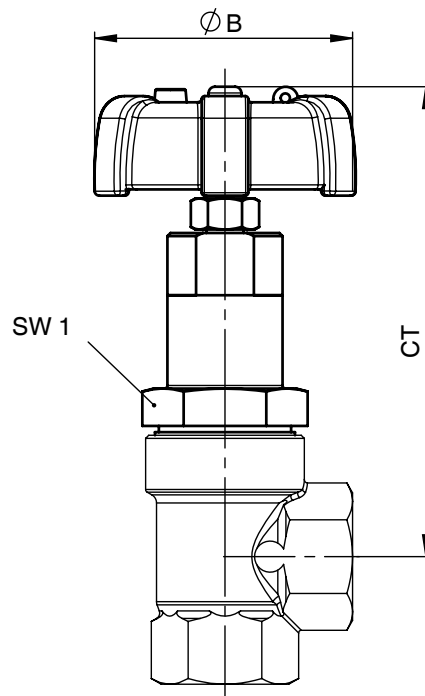
\* Bonnet code 1E, 2E (handwheel extension) are necessary for valve bodies with flanges



## Dimensions [mm]

### Installation dimensions - Valve with angle body

| Bonnet | DN | SW1 |             | øB | CT (max. height) |
|--------|----|-----|-------------|----|------------------|
| 1      | 15 | 41  | hexagonal   | 90 | 153              |
| 1      | 20 | 46  | hexagonal   | 90 | 158              |
| 1      | 25 | 46  | hexagonal   | 90 | 167              |
| 1      | 32 | 41  | double flat | 90 | 172              |
| 1      | 40 | 41  | double flat | 90 | 183              |
| 1      | 50 | 41  | double flat | 90 | 194              |





## Dimensions [mm]

### Butt weld spigots, connection code 0, 16, 17, 18, 37, 60 Valve body material: 1.4435 (code 34), 1.4408 (code 37)

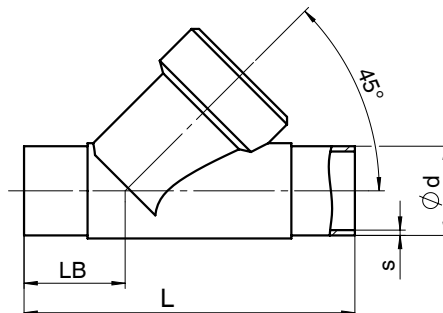
|    |     | Connection code  |     |                  |     |     |     |     |     |     |     |     |      |     |      |     |  |
|----|-----|------------------|-----|------------------|-----|-----|-----|-----|-----|-----|-----|-----|------|-----|------|-----|--|
|    |     | Material code 34 |     | Material code 37 |     | 0   |     | 16  |     | 17  |     | 18  |      | 37  |      | 60  |  |
| DN | L   | LB               | L   | LB               | ø d | s   | ø d | s   | ø d | s   | ø d | s   | ø d  | s   | ø d  | s   |  |
| 10 | 105 | 35.5             | -   | -                | -   | -   | 12  | 1.0 | 13  | 1.5 | 14  | 2.0 | -    | -   | 17.2 | 1.6 |  |
| 15 | 105 | 35.5             | 100 | 33               | 18  | 1.5 | 18  | 1.0 | 19  | 1.5 | 20  | 2.0 | -    | -   | 21.3 | 1.6 |  |
| 20 | 120 | 39.0             | 108 | 33               | 22  | 1.5 | 22  | 1.0 | 23  | 1.5 | 24  | 2.0 | -    | -   | 26.9 | 1.6 |  |
| 25 | 125 | 38.5             | 112 | 32               | 28  | 1.5 | 28  | 1.0 | 29  | 1.5 | 30  | 2.0 | 25.0 | 1.2 | 33.7 | 2.0 |  |
| 32 | 155 | 48.0             | 137 | 39               | -   | -   | 34  | 1.0 | 35  | 1.5 | 36  | 2.0 | -    | -   | 42.4 | 2.0 |  |
| 40 | 160 | 47.0             | 146 | 40               | 40  | 1.5 | 40  | 1.0 | 41  | 1.5 | 42  | 2.0 | 38.0 | 1.2 | 48.3 | 2.0 |  |
| 50 | 180 | 48.0             | 160 | 38               | 52  | 1.5 | 52  | 1.0 | 53  | 1.5 | 54  | 2.0 | 51.0 | 1.2 | 60.3 | 2.0 |  |
| 65 | -   | -                | 290 | 96               | -   | -   | -   | -   | 70  | 2.0 | -   | -   | 63.5 | 1.6 | 76.1 | 2.0 |  |
| 80 | -   | -                | 310 | 95               | -   | -   | -   | -   | 85  | 2.0 | -   | -   | 76.1 | 1.6 | 88.9 | 2.3 |  |

For materials see overview on page 14

### Butt weld spigots, connection code 59, 63, 65 Valve body material: 1.4435 (code 34), 1.4408 (code 37)

|    |     | Connection code  |     |                  |       |      |      |      |      |      |  |
|----|-----|------------------|-----|------------------|-------|------|------|------|------|------|--|
|    |     | Material code 34 |     | Material code 37 |       | 59   |      | 63   |      | 65   |  |
| DN | L   | LB               | L   | LB               | ø d   | s    | ø d  | s    | ø d  | s    |  |
| 10 | 105 | 35.5             | -   | -                | -     | -    | -    | -    | -    | -    |  |
| 15 | 105 | 35.5             | 100 | 33               | 12.70 | 1.65 | 21.3 | 2.11 | 21.3 | 2.77 |  |
| 20 | 120 | 39.0             | 108 | 33               | 19.05 | 1.65 | 26.7 | 2.11 | 26.7 | 2.87 |  |
| 25 | 125 | 38.5             | 112 | 32               | 25.40 | 1.65 | 33.4 | 2.75 | 33.4 | 3.88 |  |
| 32 | 155 | 48.0             | 137 | 39               | -     | -    | -    | -    | 42.4 | 3.56 |  |
| 40 | 160 | 47.0             | 146 | 40               | 38.10 | 1.65 | 48.3 | 2.77 | 48.3 | 3.68 |  |
| 50 | 180 | 48.0             | 160 | 38               | 50.80 | 1.65 | 60.3 | 2.77 | 60.3 | 3.91 |  |
| 65 | -   | -                | 290 | 96               | 63.50 | 1.65 | 73.0 | 3.05 | -    | -    |  |
| 80 | -   | -                | 310 | 95               | 76.20 | 1.65 | 88.9 | 3.05 | -    | -    |  |

For materials see overview on page 14



## Dimensions [mm]

### Butt weld spigots, connection code 0, 16, 17, 18, 59, 60 Valve body material: Forged body (code 40)

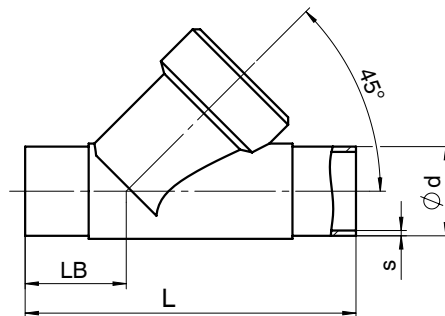
|     |    |      | Connection code |     |     |     |     |     |     |     |       |      |      |     |
|-----|----|------|-----------------|-----|-----|-----|-----|-----|-----|-----|-------|------|------|-----|
|     |    |      | 0               |     | 16  |     | 17  |     | 18  |     | 59    |      | 60   |     |
| DN  | L  | LB   | ø d             | s   | ø d | s   | ø d | s   | ø d | s   | ø d   | s    | ø d  | s   |
| 6*  | 80 | 26.5 | 8               | 1.0 | -   | -   | -   | -   | -   | -   | -     | -    | -    | -   |
| 8*  | 80 | 26.5 | 10              | 1.0 | -   | -   | -   | -   | -   | -   | -     | -    | 13.5 | 1.6 |
| 10* | 80 | 26.5 | -               | -   | 12  | 1.0 | 13  | 1.5 | 14  | 2.0 | 9.53  | 0.89 | -    | -   |
| 15* | 80 | 26.5 | -               | -   | -   | -   | -   | -   | -   | -   | 12.70 | 1.65 | -    | -   |

\* only with actuator size 0

### Butt weld spigots, connection code 17, 59, 60 Valve body material: 1.4435 (code C2)

|    |      |       | Connection code |     |      |     |       |      |
|----|------|-------|-----------------|-----|------|-----|-------|------|
|    |      |       | 17              |     | 60   |     | 59    |      |
| DN | L    | LB    | ø d             | s   | ø d  | s   | ø d   | s    |
| 8  | 105* | 35.5* | -               | -   | 13.5 | 1.6 | -     | -    |
| 10 | 105  | 35.5  | 13              | 1.5 | 17.2 | 1.6 | -     | -    |
| 15 | 105  | 35.5  | 19              | 1.5 | 21.3 | 1.6 | 12.70 | 1.65 |
| 20 | 120  | 39.0  | 23              | 1.5 | 26.9 | 1.6 | 19.05 | 1.65 |
| 25 | 125  | 39.5  | 29              | 1.5 | 33.7 | 2.0 | 25.40 | 1.65 |
| 32 | 155  | 48.0  | 35              | 1.5 | 42.4 | 2.0 | -     | -    |
| 40 | 160  | 47.0  | 41              | 1.5 | 48.3 | 2.0 | 38.10 | 1.65 |
| 50 | 180  | 48.0  | 53              | 1.5 | 60.3 | 2.0 | 50.80 | 1.65 |
| 65 | 290  | 96.0  | 70              | 2.0 | 76.1 | 2.0 | 63.50 | 1.65 |
| 80 | 310  | 95.0  | 85              | 2.0 | 88.9 | 2.3 | 76.20 | 1.65 |

\* Connection code 1A: L = 100, LB = 33,5



## Body dimensions [mm]

### Threaded sockets DIN, connection code 1 Valve body material: 1.4408 (code 37)

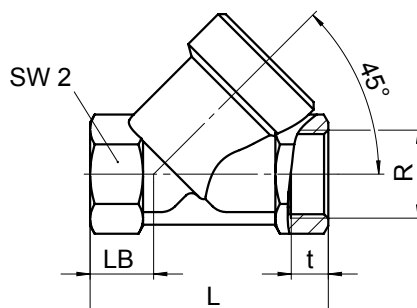
| DN  | L   | LB   | R       | t    | SW2 |           |
|-----|-----|------|---------|------|-----|-----------|
| 8*  | 65  | 19.0 | G 1/4   | 12.0 | 17  | hexagonal |
| 10* | 65  | 19.0 | G 3/8   | 12.0 | 24  | hexagonal |
| 15* | 65  | 19.0 | G 1/2   | 11.4 | 24  | hexagonal |
| 10  | 65  | 16.5 | G 3/8   | 11.4 | 27  | hexagonal |
| 15  | 65  | 16.5 | G 1/2   | 15.0 | 27  | hexagonal |
| 20  | 75  | 17.5 | G 3/4   | 16.3 | 32  | hexagonal |
| 25  | 90  | 24.0 | G 1     | 19.1 | 41  | hexagonal |
| 32  | 110 | 33.0 | G 1 1/4 | 21.4 | 50  | octagonal |
| 40  | 120 | 30.0 | G 1 1/2 | 21.4 | 55  | octagonal |
| 50  | 150 | 40.0 | G 2     | 25.7 | 70  | octagonal |
| 65  | 190 | 46.0 | G 2 1/2 | 30.2 | 85  | octagonal |
| 80  | 220 | 50.0 | G 3     | 33.3 | 100 | octagonal |

\* only with bonnet size 0

### Threaded sockets NPT, BS 21 Rc, connection code 3C, 3D Valve body material: 1.4408 (code 37)

|     |     |      |     |           | Connection code |      |            |      |
|-----|-----|------|-----|-----------|-----------------|------|------------|------|
|     |     |      |     |           | 3C              |      | 3D         |      |
| DN  | L   | LB   | SW2 |           | R               | t    | R          | t    |
| 8*  | 65  | 19.0 | 17  | hexagonal | -               | -    | 1/4" NPT   | 10.1 |
| 10* | 65  | 27.0 | 24  | hexagonal | -               | -    | 3/8" NPT   | 10.4 |
| 15* | 65  | 27.0 | 24  | hexagonal | -               | -    | 1/2" NPT   | 13.6 |
| 15  | 65  | 16.5 | 27  | hexagonal | Rc 1/2          | 15.0 | 1/2" NPT   | 13.6 |
| 20  | 75  | 17.5 | 32  | hexagonal | Rc 3/4          | 16.3 | 3/4" NPT   | 14.1 |
| 25  | 90  | 24.0 | 41  | hexagonal | Rc 1            | 19.1 | 1" NPT     | 17.0 |
| 32  | 110 | 33.0 | 50  | octagonal | Rc 1 1/4        | 21.4 | 1 1/4" NPT | 17.5 |
| 40  | 120 | 30.0 | 55  | octagonal | Rc 1 1/2        | 21.4 | 1 1/2" NPT | 17.3 |
| 50  | 150 | 40.0 | 70  | octagonal | Rc 2            | 25.7 | 2" NPT     | 17.8 |
| 65  | 190 | 46.0 | 85  | octagonal | Rc 2 1/2        | 30.2 | 2 1/2" NPT | 23.7 |
| 80  | 220 | 50.0 | 100 | octagonal | Rc 3            | 33.3 | 3" NPT     | 25.8 |

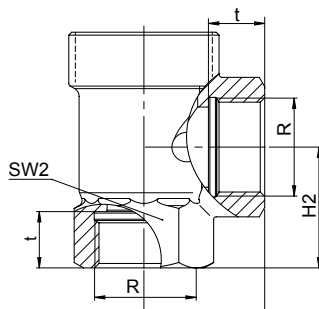
\* only with bonnet size 0



## Body dimensions [mm]

### Threaded sockets DIN, connection code 1, 3D / Angle body Valve body material: 1.4408 (code 37)

| DN | SW2 | LE | H2   | Connection code 1 |      | Connection code 3D |      |
|----|-----|----|------|-------------------|------|--------------------|------|
|    |     |    |      | R                 | t    | R                  | t    |
| 15 | 27  | 30 | 30.0 | G 1/2             | 15.0 | 1/2" NPT           | 13.6 |
| 20 | 32  | 35 | 37.5 | G 3/4             | 16.3 | 3/4" NPT           | 14.1 |
| 25 | 41  | 41 | 41.0 | G 1               | 19.1 | 1" NPT             | 17.0 |
| 32 | 50  | 50 | 48.0 | G 1 1/4           | 21.4 | 1 1/4" NPT         | 17.5 |
| 40 | 55  | 50 | 55.0 | G 1 1/2           | 21.4 | 1 1/2" NPT         | 17.3 |
| 50 | 70  | 60 | 62.0 | G 2               | 25.7 | 2" NPT             | 17.8 |

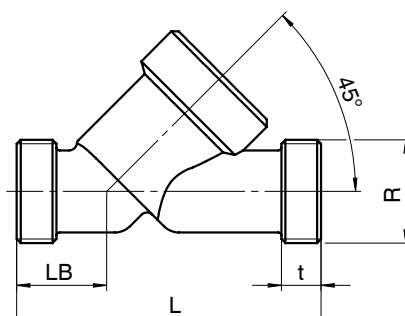


### Threaded spigots, connection code 9 Valve body material: 1.4408 (code 37), Forged body (code 40)

| DN  | L   | LB | t  | R       |
|-----|-----|----|----|---------|
| 6*  | 65  | 19 | 12 | G 1/4   |
| 8*  | 65  | 19 | 12 | G 3/8   |
| 10* | 65  | 19 | 12 | G 1/2   |
| 15* | 65  | 19 | 12 | G 3/4   |
| 15  | 90  | 25 | 12 | G 3/4   |
| 20  | 110 | 30 | 15 | G 1     |
| 25  | 118 | 30 | 15 | G 1 1/4 |
| 32  | 130 | 38 | 13 | G 1 1/2 |
| 40  | 140 | 35 | 13 | G 1 3/4 |
| 50  | 175 | 50 | 15 | G 2 3/8 |
| 65  | 216 | 52 | 15 | G 3     |
| 80  | 254 | 64 | 18 | G 3 1/2 |

\* only with bonnet size 0

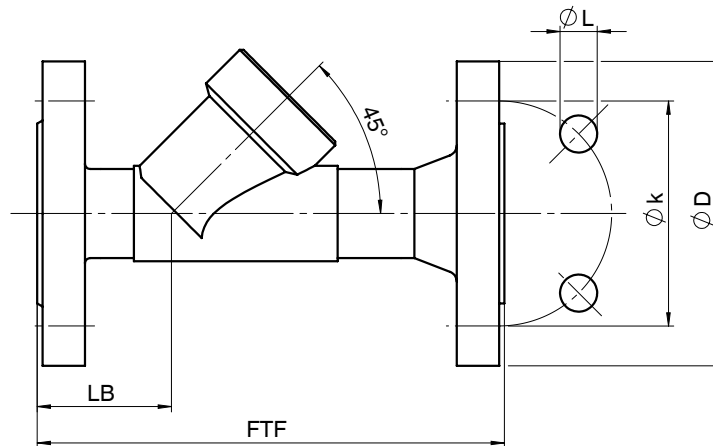
For materials see overview on page 14



**Body dimensions [mm]**

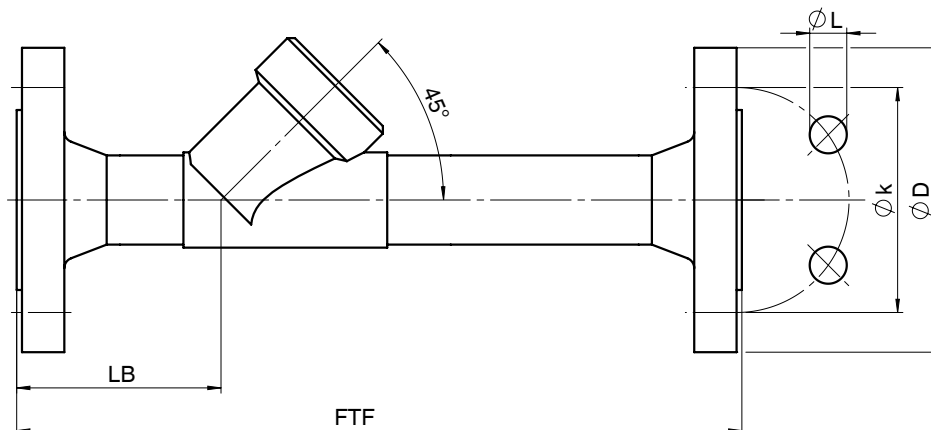
**Flanges, connection code 10  
Valve body material: 1.4408 (code 37)**

| DN | FTF | LB | ø D | ø L | ø k | Number of bolts |
|----|-----|----|-----|-----|-----|-----------------|
| 15 | 130 | 33 | 95  | 14  | 65  | 4               |
| 20 | 150 | 45 | 105 | 14  | 75  | 4               |
| 25 | 160 | 44 | 115 | 14  | 85  | 4               |
| 32 | 180 | 51 | 140 | 18  | 100 | 4               |
| 40 | 200 | 52 | 150 | 18  | 110 | 4               |
| 50 | 230 | 50 | 165 | 18  | 125 | 4               |



**Flanges, connection code 13, 47  
Valve body material: 1.4435 (code 34)**

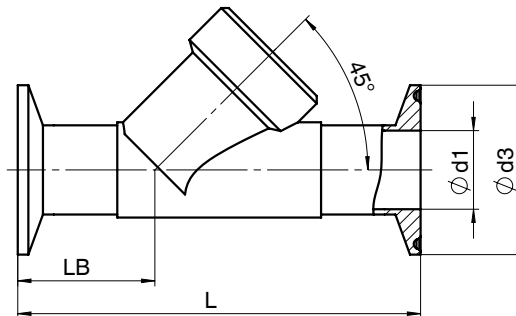
| DN | FTF | LB | Connection code 13 |     |     |                 | Connection code 47 |      |       |                 |
|----|-----|----|--------------------|-----|-----|-----------------|--------------------|------|-------|-----------------|
|    |     |    | ø D                | ø L | ø k | Number of bolts | ø D                | ø L  | ø k   | Number of bolts |
| 15 | 210 | 72 | 95                 | 14  | 65  | 4               | 89.0               | 15.7 | 60.5  | 4               |
| 20 | 280 | 78 | 105                | 14  | 75  | 4               | 98.6               | 15.7 | 69.8  | 4               |
| 25 | 280 | 77 | 115                | 14  | 85  | 4               | 108.0              | 15.7 | 79.2  | 4               |
| 32 | 310 | 89 | 140                | 18  | 100 | 4               | 117.3              | 15.7 | 88.9  | 4               |
| 40 | 320 | 91 | 150                | 18  | 110 | 4               | 127.0              | 15.7 | 98.6  | 4               |
| 50 | 330 | 95 | 165                | 18  | 125 | 4               | 152.4              | 19.1 | 120.7 | 4               |



## Body dimensions [mm]

**Clamp connections, connection code 80, 82, 86, 88**  
**Valve body material: 1.4435 (code 34)**

| DN | NPS    | Connection code |     |      |      |      |      |       |      | Connection code |       |       |      |
|----|--------|-----------------|-----|------|------|------|------|-------|------|-----------------|-------|-------|------|
|    |        | LB              | L   | 82   |      | 86   |      | 88    |      | 80              |       |       |      |
|    |        |                 |     | ø d1 | ø d3 | ø d1 | ø d3 | ø d1  | ø d3 | LB              | L     | ø d1  | ø d3 |
| 15 | 1/2"   | 47.5            | 130 | 18.1 | 50.5 | 16   | 34.0 | 9.40  | 25.0 | 33.5            | 101.6 | 9.40  | 25.0 |
| 20 | 3/4"   | 54.0            | 150 | 23.7 | 50.5 | 20   | 34.0 | 15.75 | 25.0 | 30.0            | 101.6 | 15.75 | 25.0 |
| 25 | 1"     | 56.0            | 160 | 29.7 | 50.5 | 26   | 50.5 | 22.10 | 50.5 | 33.0            | 114.3 | 22.10 | 50.5 |
| 32 | 1 1/4" | 62.0            | 180 | 38.4 | 64.0 | 32   | 50.5 | -     | -    | -               | -     | -     | -    |
| 40 | 1 1/2" | 67.0            | 200 | 44.3 | 64.0 | 38   | 50.5 | 34.80 | 50.5 | 37.0            | 139.7 | 34.80 | 50.5 |
| 50 | 2"     | 73.0            | 230 | 56.3 | 77.5 | 50   | 64.0 | 47.50 | 64.0 | 36.5            | 158.8 | 47.50 | 64.0 |



## Overview of metal bodies for GEMÜ 507

| Connection code | Spigots |    |    |    |    |    |    |    |    |    |    |    |    |    |    |    |    |    |    |    |    |    |
|-----------------|---------|----|----|----|----|----|----|----|----|----|----|----|----|----|----|----|----|----|----|----|----|----|
|                 | 0       |    | 16 |    | 17 |    |    |    | 18 |    | 37 |    | 59 |    |    |    | 60 |    |    |    | 63 | 65 |
| Material code   | 34      | 40 | 34 | 40 | 34 | 37 | 40 | C2 | 34 | 40 | 34 | 37 | 34 | 37 | 40 | C2 | 34 | 37 | 40 | C2 | 37 | 34 |
| DN 6            | -       | X* | -  | -  | -  | -  | -  | -  | -  | -  | -  | -  | -  | -  | -  | -  | -  | -  | -  | -  | -  | -  |
| DN 8            | -       | X* | -  | -  | -  | -  | -  | -  | -  | -  | -  | -  | -  | -  | -  | -  | -  | -  | X* | -  | -  | -  |
| DN 10           | -       | -  | -  | X* | -  | -  | X* | -  | -  | X* | -  | -  | -  | -  | X* | -  | -  | -  | -  | -  | -  | -  |
| DN 15           | -       | -  | -  | -  | -  | -  | -  | -  | -  | -  | -  | -  | -  | -  | X* | -  | -  | -  | -  | -  | -  | -  |
| DN 8            | -       | -  | -  | -  | -  | -  | -  | -  | -  | -  | -  | -  | -  | -  | -  | -  | -  | -  | -  | -  | X  | -  |
| DN 10           | -       | -  | X  | -  | X  | -  | -  | X  | -  | -  | -  | -  | -  | -  | -  | -  | X  | -  | -  | X  | -  | -  |
| DN 15           | X       | -  | X  | -  | X  | X  | -  | X  | X  | -  | -  | -  | X  | -  | -  | X  | X  | X  | -  | X  | X  | X  |
| DN 20           | X       | -  | X  | -  | X  | X  | -  | X  | X  | -  | -  | -  | X  | -  | -  | X  | X  | X  | -  | X  | X  | X  |
| DN 25           | X       | -  | X  | -  | X  | X  | -  | X  | X  | -  | X  | -  | X  | -  | -  | X  | X  | X  | -  | X  | X  | X  |
| DN 32           | -       | -  | X  | -  | X  | X  | -  | X  | X  | -  | -  | -  | -  | -  | -  | -  | X  | X  | -  | X  | -  | X  |
| DN 40           | X       | -  | X  | -  | X  | X  | -  | X  | X  | -  | X  | -  | X  | -  | -  | X  | X  | X  | -  | X  | X  | X  |
| DN 50           | X       | -  | X  | -  | X  | X  | -  | X  | X  | -  | X  | -  | X  | -  | -  | X  | X  | X  | -  | X  | X  | X  |
| DN 65           | -       | -  | -  | -  | -  | X  | -  | X  | -  | -  | -  | X  | -  | X  | -  | X  | -  | X  | -  | X  | X  | -  |
| DN 80           | -       | -  | -  | -  | -  | X  | -  | X  | -  | -  | -  | X  | -  | X  | -  | X  | -  | X  | -  | X  | X  | -  |

\* only with bonnet size 0

## Overview of metal bodies for GEMÜ 507

| Connection code    | Threaded connections |            |    |    |    |              | Clamps     |    |    |    | Flanges |      |    |    |
|--------------------|----------------------|------------|----|----|----|--------------|------------|----|----|----|---------|------|----|----|
|                    | 1                    |            | 3C | 9  |    | 3D           |            | 80 | 82 | 86 | 88      | 10** | 13 | 47 |
| Material code      | 37                   | 37         | 37 | 37 | 40 | 37           | 37         | 34 | 34 | 34 | 34      | 37   | 34 | 34 |
| Body configuration | 2/2-way body         | Angle body |    |    |    | 2/2-way body | Angle body |    |    |    |         |      |    |    |
| DN 6               | -                    | -          | -  | -  | X* | -            | -          | -  | -  | -  | -       | -    | -  | -  |
| DN 8               | X*                   | -          | -  | X* | -  | X*           | -          | -  | -  | -  | -       | -    | -  | -  |
| DN 10              | X*                   | -          | -  | X* | -  | X*           | -          | -  | -  | -  | -       | -    | -  | -  |
| DN 15              | X*                   | -          | -  | X* | -  | X*           | -          | -  | -  | -  | -       | -    | -  | -  |
| DN 10              | X                    | -          | -  | -  | -  | -            | -          | -  | -  | -  | -       | -    | -  | -  |
| DN 15              | X                    | X          | X  | X  | -  | X            | X          | X  | X  | X  | X       | X    | X  | X  |
| DN 20              | X                    | X          | X  | X  | -  | X            | X          | X  | X  | X  | X       | X    | X  | X  |
| DN 25              | X                    | X          | X  | X  | -  | X            | X          | X  | X  | X  | X       | X    | X  | X  |
| DN 32              | X                    | X          | X  | X  | -  | X            | X          | -  | X  | X  | -       | X    | X  | X  |
| DN 40              | X                    | X          | X  | X  | -  | X            | X          | X  | X  | X  | X       | X    | X  | X  |
| DN 50              | X                    | X          | X  | X  | -  | X            | X          | X  | X  | X  | X       | X    | X  | X  |
| DN 65              | X                    | -          | X  | X  | -  | X            | -          | -  | -  | -  | -       | -    | -  | -  |
| DN 80              | X                    | -          | X  | X  | -  | X            | -          | -  | -  | -  | -       | -    | -  | -  |

\* only with bonnet size 0

\*\* only with bonnet size 1E or 2E

For further globe valves, accessories and other products, please see our Product Range catalogue and Price List.  
Contact GEMÜ.

**GEMÜ**® VALVES, MEASUREMENT AND CONTROL SYSTEMS

